

Replacing the 720 kB disk drive of a Philips NMS 8250/55/80

Original by: Bas Kornalijnslijper

Translated by: Bart Hamer



Warning:

The most important part in the computer is the printed circuit board (PCB). Parts can be replaced, but not the PCB. Do not try to unsolder the parts, but cut them loose and then remove the solder pins. The use of IC sockets is recommended.

Replacing the original disk drive with a new disk drive is very easy. The replacement disk drive is 7 mm lower than the original disk drive. For this description a Philips NMS 8250 was used and a new disk drive with a white front, but of course it is much nicer to use a disk drive with a black front. This description can also be used for the Philips NMS 8255 and the Philips NMS 8280 computers and for installing or replacing a second disk drive.



The Philips NMS 8250 MSX-2 computer.



The Philips NMS 8250 computer with the original disk drive.

Requisites:

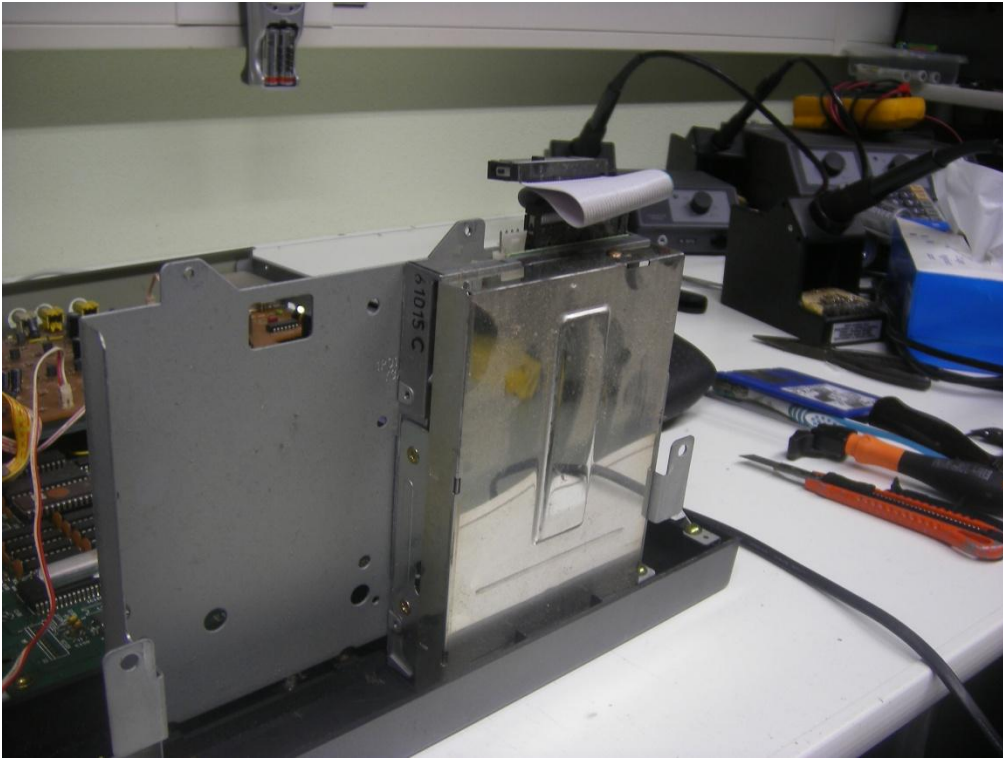
- Disk drive suitable for MSX and correctly configured as A- or B-drive.

Disassembly:

- Remove the cover, which is secured with seven screws.
- Remove the support beam, which is secured with four screws.
- Remove the front panel with the bottom plate for the disk drive(s), which is secured with four screws.
- Remove the disk drive by tilting the front panel forward and loosening the four screws on the bottom of the bracket.

Mounting the disk drive:

- Place a new disk drive on the bracket and fill the remaining space in the front panel, for example with a piece of plastic angle bracket.
- Depending on the type of disk drive, the location of the power connector may differ. If it is on the right side, the original power cable is too short and should be extended.
- Take a slightly longer 34-core cable with connectors. Reconnect the 34-pin connector, but rotated 180° on one side (see photo).



The front panel is tilted so that the disk drive can be removed.



The 34-core cable with 180° rotation and the extended power cable.



The Philips NMS 8250 computer with the new disk drive installed.